

ENROLMENT INFORMATION



2026

**DANCE
CENTRAL
STUDIOS**
info Pack

TABBLE OF CONTENTS

01

Introduction

02

Classes

03

Tuition

04

Uniform

05

Terms and conditions

JOIN US

Our mission to
celebrate diversity and
self-expression through
dance

**THANK YOU FOR SHOWING
AN INTEREST IN OUR STUDIO.**

**THIS BOOKLET CONTAINS
EVERYTHING YOU TO
COMPLETE YOUR ENROLMENT
AND JOIN US IN STUDIO.**

MISS SHARON - DIRECTOR

OUR LOCATIONS

We have two teaching spaces - one at the Huntsbury Community and the other at Risingholme Learning Centres.

We refer to these as either "Huntsbury" or "Risingholme" on our timetable their addresses are:

Huntsbury: 30H Huntsbury Avenue.
Risingholme: via the carpark at 99 Hawford Road.

ENROL WITH US

Complete any of the below options to enrol with us at Dance Central Studios:

1. Enrol via our website
2. Complete a form at Enrolment Day

Please note your place in a class is only secure when you've paid full-term fees.

CONTACT US

Email and our Facebook page are our communication channels. Please check your emails regularly for information.

Students are added to our email database at the time of enrolment.

If you have any concerns or queries please speak to your child's class teacher or contact us on Facebook or email us at dance_central@yahoo.com.



A YEAR WITH US

HERE ARE ALL THE AMAZING THINGS OUR STUDENTS ACHIEVE IN A YEAR AT DANCE CENTRAL STUDIOS - YOU COULD DO IT TOO!

TERM ONE

01.

Monday 02 February - Thursday 2 April

Public holidays: Waitangi Day – Friday 6 February

- Summer School
- Watching week
- Company showcase

TERM TWO

02.

Monday 20 April - Saturday 4 July

Public holidays: Anzac Day – Saturday 25 April (Anzac Day observed on Monday 27 April) and King's Birthday – Monday 1 June

- Watching week
- Holiday workshop

TERM THREE

03.

Monday 20 July - Saturday 25 September

- Mid-year showcase Weekend
- Examinations Medal tests
- Exam rehearsals Jazz and - Contemporary Examinations Ballet

TERM FOUR

04.

Monday 12 October - Friday 11 December TBA

Public Holidays: Labour Weekend – Monday 26 October and Canterbury Anniversary holidays

- Weekend production rehearsals
- Annual production

OUR CLASSES



PRESCHOOL DANCE

Ages 3+

An introductory dance class that explores movement to music. A universal pathway to our Mini ballet and jazz classes.

BALLET

Ages 5+

A traditional style, ballet technique is the centre of all styles. Classes develop poise and coordination with a focus on execution. A great base for any dancer.

JAZZ

Ages 7+

A fast-paced class focused on sheer enjoyment. Dance to popular music and develop your confidence moving at speed.

OPEN BALLET

Ages 7+

Develops classical artistry and technique in a variety of settings. New learning each week develops students ability to pick up classical choreography.

COMPANY

Ages 8+

A performance-focused class that explores lyrical to Broadway. Master choreography and enjoy non-competitive performances

MUSICAL THEATRE

Ages 10+

Become a triple threat - an actor, singer and dancer. Learn the style of dances seen in shows like Matilda, Wicked and more!

CONTEMPORARY

Ages 12+

This free and expressive style explores the concepts of weight, flow and momentum. Perfect for beginners or all-rounders.

POINTE

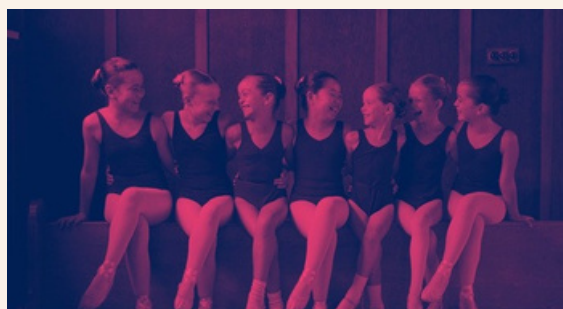
Ages 12+

Dedicated to foot preparation and strengthening for pointe work. Build's confidence and technical proficiency.

ADULT BALLET

Adults

Suitable for absolute beginners or those with experience. Class includes: warm-up, barre and centre exercises.



OUR LEVELS & CLASSES OFFERED

Your child's age is used as a guideline for which level to enrol in..

Review our age guide and coordinating levels

Age	Ballet	Jazz	Lyrical/ Contemp	Open Ballet	Company
3/4	Preschool Dance				
5	Pre Primary				
6	Primary				
7	Grade 1	Mini Jazz			
8	Grade 2				
9	Grade 3	Junior Jazz		Junior Ballet Academy	Junior Company
10	Grade 4				
11	Grade 5	Pre Teen Jazz	Pre Teen Contemp	Senior Open Ballet	Pre Teen Company
12	Intermediate Foundation				
13	Intermediate Foundation				
14	Intermediate	Teen Jazz	Teen Contemp		Teen Company
15	Intermediate				

Every dancer has unique learning needs - some fare better in a class where they're older due to physical or social maturity.

All class enrolments are subject to approval by the director.



OUR TUITION

Each term is a minimum of 8 weeks, some terms are longer (9 or 10 weeks) but there is no extra cost. There are no classes on public holidays or during school holidays. Tuition includes:

- Weekly classes
- Syllabus classes to prepare students to enter an examination or class assessment
- Opportunity to perform in our mid-year showcase and production
- Access to our DCS Internship programme to learn dance teaching skills (Teen students)
- Any additional exam, medal test, showcase and production rehearsals

Our ballet, jazz and contemporary classes follow a syllabus. Each lesson follows a curriculum to develop your dancer's skill set to complete an exam - progressing to the level above.

We have an open-door policy for parents to view their child's classes at any time. Watching week is an opportunity to check your child's exam preparedness.

In-studio class assessments are offered for students who are unable to sit an examination.

Exams provide a sense of achievement and are a real confidence boost.

An exam is achievable for dancers who regularly attend their syllabus classes.



DCS

TERM FEES

All term fees presented excl. GST

PRESCHOOL & MINI **01.**

These classes support early learners. Classes explore movement to music and build skills to progress our Junior classes.

Class / Level	Tuition
Preschool Dance (30min)	\$105
Pre-Primary Ballet (30 min)	\$113
Primary Ballet (45min)	\$141



JUNIOR CLASSES **02.**

These classes safely and progressively improve technique in line with the marking criteria of our syllabi.

Grade 3 Ballet requires two classes. Students who attend one class per week may not be able to enter an examination.

Other Junior classes are taught as one class per week.

Tuition is discounted based on the volume of classes your dancer enrolls in. Twice weekly classes e.g. Grade 4 Ballet is counted as two classes and costs \$246.

Class options: Grade 1-3 Ballet, Junior Ballet Academy, Boys only Junior Jazz and Junior Company

Number of classes	Tuition
1 class per week	\$141
2 classes per week	\$248
3 classes per week	\$334
4 classes per week	\$419

PRE TEEN CLASSES**03.**

Tuition includes prerequisite classes to deliver an appropriate level of training to meet the demands of our syllabi.

Grade 4 and 5 Ballet requires two syllabus classes. Students who attend one class per week may not be able to enter an examination.

Intermediate Foundation Ballet requires two syllabus classes and an open ballet, pointe and stretch and conditioning class.

Tuition is discounted based on the volume of classes your dancer enrolls in. Twice weekly classes e.g. Grade 4 Ballet is counted as two classes and costs \$246.

Class options: Grade 4 - Intermediate Foundation Ballet, Junior Ballet Academy, Senior Open Ballet, Pointe, Stretch, Pre Teen Jazz, Pre Teen Contemporary and Pre Teen Company

Number of weekly classes	Tuition	Number of weekly classes	Tuition
1 class	\$155	5 classes	\$499
2 classes	\$248	6 classes	\$557
3 classes	\$344	7 classes	\$604
4 classes	\$428	8 classes	\$639

Stretch class (Intermediate Foundation and above) is offered free of charge.

**TEEN & SENIOR
CLASSES (INCL. ADULT BALLET)**
04.

Consistent with prior levels, tuition includes prerequisite classes to deliver an appropriate level of training in line with the demands of our syllabi.

Intermediate Ballet tuition requires two syllabus classes and a weekly open ballet, pointe and stretch and conditioning class.

Other Teen classes are taught as one class per week.

Tuition is discounted based on the volume of class enrolments. Twice weekly classes are counted individually. i.e. Intermediate Ballet tuition costs \$426 (4 classes total).

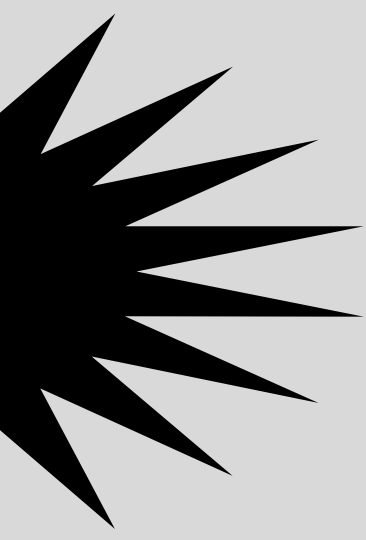
There is no charge for stretch class (Intermediate Foundation and above).

Class options: Intermediate Foundation and Intermediate Ballet, Senior Open Ballet, Senior Ballet Company, Pointe, Stretch, Teen Jazz, Teen Contemporary and Teen Company

Number of weekly classes	Tuition	Number of weekly classes	Tuition
1 class	\$179	6 classes	\$657
2 classes	\$297	7 classes	\$714
3 classes	\$409	8 classes	\$752
4 classes	\$506	9 classes	\$783
5 classes	\$589	10 classes	\$795



DC COMPANY



Company is all about performance! Students will learn and rehearse group choreography the same way that we do for production.

Members will enjoy performances throughout the year. Performances are non-competitive and varied throughout the year.

Students will learn to work as part of a team and develop their stage presence and artistry.

Company classes embrace a range of dance styles likely to include: jazz, musical theatre, Broadway, lyrical, and contemporary.

Students need a strong technical base to work in new dance styles.

Students need to enrol in these pre-requisite classes (right):

Pre-requisite class enrolments for company members:
Junior Company

- Working towards a ballet or jazz examination

Pre Teen Company

- Working towards a ballet, jazz or contemporary examination
- Attending two or more classes per week

Teen Company

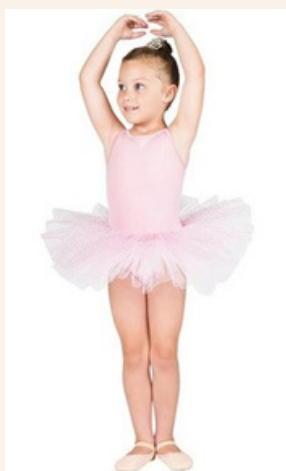
- Working towards a ballet, jazz or contemporary examination
- Attending four or more classes per week.



UNIFORM

WEARING A UNIFORM IS AN IMPORTANT ASPECT OF BEING A MEMBER OF DANCE CENTRAL STUDIOS. STUDENTS MUST WEAR FULL UNIFORM TO CLASS.

BALLET UNIFORM



PRESCHOOL DANCE

Dancers choice of Pink BBO Chloe Dress or Pink Ballerina tutu

Elastic leather ballet shoes

Hair secured in a bun with a pink ribbon



PRE-PRIMARY + PRIMARY

Pink BBO Chloe Dress with flesh ballet tights or socks

Elastic leather ballet shoes

Hair secured in a bun with a pink ribbon

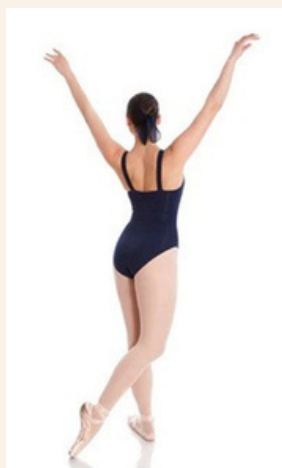


GRADES 1-3

Navy *Bronwyn* Leotard with flesh ballet tights or socks

Elastic leather ballet shoes and character skirt and shoes

Hair secured in a bun with a blue ribbon

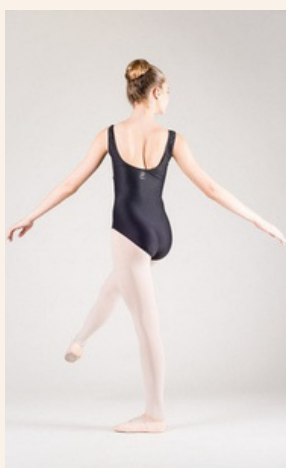


GRADES 4-5

Navy *Bronwyn* Leotard with flesh ballet tights or socks

Ribbon leather ballet shoes and character skirt and shoes

Hair secured in a bun with a blue ribbon

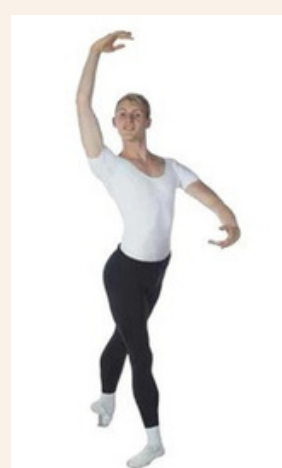


INTERMEDIATE FOUNDATION +

Black *FaustineWear* Moi Leotard and "Pink" Cappezio ballet tights. Cappezio leather/canvas shoes, elastics.

Pointe shoes as required

Hair secured in a bun with a black ribbon.



ALL AGES MALE

White Aaron Leotard with Black leggings

White ballet shoes with white calf length socks

Pointe Shoes

DCS

POINTE SHOE INFO PACK

Beginning pointe work is an exciting milestone in a dancer's training. It is also a stage that requires careful preparation to ensure strength, safety, and long-term development. At Dance Central Studios, we follow best-practice guidelines to ensure each student is physically ready before progressing onto pointe.



PRE-POINTE ASSESSMENT

Before any student is permitted to begin pointe work, they must complete a Pre-Pointe Assessment.

This assessment is based on the internationally recognised philosophy of Physiotherapist Lisa Howell, whose research focuses on dance-specific strength, alignment, and injury prevention.

The assessment will be conducted by:
Gorgina Barr – Physiotherapist (Dance Specialist)

Phone
[021 565 603](tel:021565603)

Email
georgina@barrina.co.nz

WHY IS IT IMPORTANT?

Pointe work places extra stress on the feet, ankles, knees, and hips.

Starting too early can increase the risk of injury and may affect long-term technique.

The assessment helps ensure that students are progressing based on physical and developmental readiness, not just age or enthusiasm.

WHEN TO PURCHASE?

Students should not purchase pointe shoes until:

- They have successfully passed the pre-pointe assessment, and
- They have been advised by their teacher that they are ready for fitting

Once approved, students will be guided on:

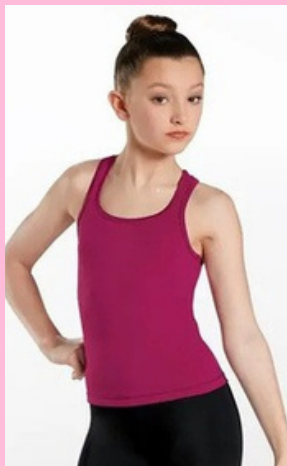
- Where to be professionally fitted
- Appropriate shoe styles for their foot type
- Required sewing and ribbon/elastic placement

Incorrectly fitted pointe shoes can cause pain and injury, so professional fitting is essential.



JAZZ UNIFORM

Uniform can be purchased through our website. Items are studio-exclusive and sourced from a global manufacturer.

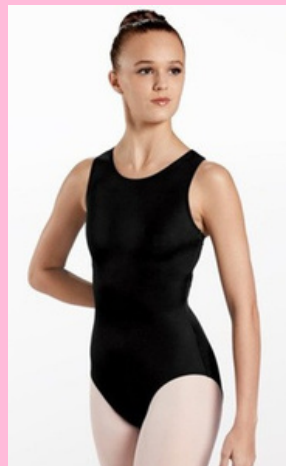


MINI AND JUNIOR

Studio exclusive tank top worn with black dance shorts

Tan pull on leather jazz shoes

Hair secured off the face



PRE-TEEN AND TEEN

Studio exclusive leotard worn with black dance tights

Tan pull on leather jazz shoes

Hair secured off the face

OTHER UNIFORM

Our collection also includes optional items that can be worn to non-syllabus classes or as a warm-up layer in Winter. Regulation ballet or jazz uniform is also acceptable for non-syllabus classes but students must wear appropriate footwear.

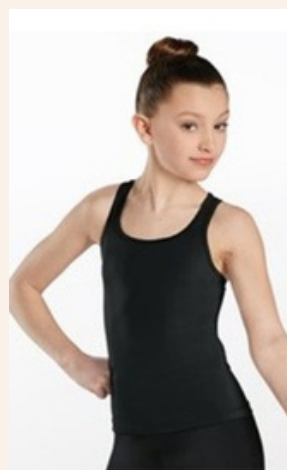


JACKET

Black long sleeved zip front jacket.

Screen print logo centre back.

Available in children's and adults sizes

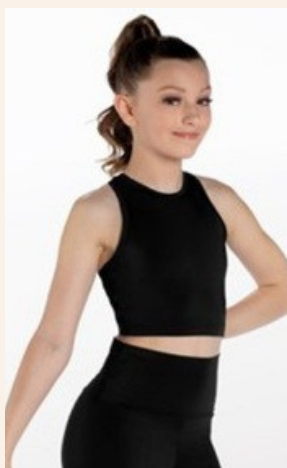


TANK TOP

Black scoop neck tank top (MT12464)

Racer back design, full lined. Adult sizes include a shelf-bra

Available in child or adults sizes



CROP TOP

Black long line crop top (MT12508)

Racer back design, fully lined. Adult sizes include a shelf bra

Available in child or adults sizes.



BIKE SHORTS

Black lustre bike shorts (14863)

Available in child or adults sizes

TERM AND CONDITIONS

By enrolling your child in our classes you are agreeing to the terms and conditions and code of conduct below.

ENROLMENT FORM

An enrolment form must be completed before participating in any class.

For new student enrolments you will receive an invoice. Full payment will secure your child's space in a class.

New students can attend one free trial class. On a decision to join full-term fees must be paid for the remainder of the term.

FEES

Invoices for term fees are emailed and are payable within 14 days of receipt. It is the responsibility of the parent to inform the studio of any errors so an updated one can be issued.

Unpaid term fees will incur a 10% late fee after 14 days. Arrears of more than two terms will be forwarded to a collection agency unless a prior arrangement has been made. Collections will be added to the fees owed.

Cheques will not be accepted. Accepted payment methods are listed below:

Bank transfer to Dance Central Studios bank account (02-0820-0134119-003) using your invoice number and child's full name as a reference.



Please contact Dance Central if you wish to make part payments on your invoice.

Fees remain payable in cases of absence. There are no reductions or credits for sickness, injury or holidays.

CLASS TIMING

The class timetable is subject to change and Dance Central Studios reserves the right to adjust it.

Timetabled classes include time at the start/end for registration and class changeover. Students are expected to arrive ahead of their scheduled class time. Late students miss out on warmup exercises that will prevent them from safely participating in the rest of the class.

CLASS TIMING CONT.

Some classes run back to back on the timetable without a break. Students should be dressed and ready to start their class before entering the studio and leave promptly at the end.

Parents and Students are asked to wait quietly outside the studio until the class teacher invites in them.

Students are expected to attend all their timetabled classes and rehearsals.

CHOREOGRAPHY

The intellectual property of routines taught in class or private lessons remains the property of the choreographer.

If a student leaves Dance Central Studios they forfeit their right to perform such choreography.

If a choreographer leaves the studio, the student can continue to use the choreography for 12 months.

Students cannot perform solo choreography or enter competitions or medal tests without the choreographer's consent.

Students who learn solo choreography may be subject to additional conditions set by their teacher.

UNIFORM

Students must wear regulation Dance Central uniform and footwear for all classes. Hair is to be neatly groomed and secured away from the face.

All students must order/purchase the regulation uniform at the time of enrolment. A transitional period applies for new students who are awaiting their uniform.

ABSENCES

We share a concern for the health and safety of all dancers. Please take the time to advise us if your dancer will be absent.

Student absences are to be emailed in advance of your child's class to dance_central@yahoo.com.

RESPONSIBILITIES

Parents of children younger than 5 years old must remain with their child for the class duration.

If your child needs assistance, is unwell or has an accident while on the premises and during classes there must be an adult accessible at all times.

Class teachers cannot take responsibility for assisting children in the bathroom. Students who cannot do this independently must have a parent attend class with them until they can do so by themselves.

Parents must walk their children in/out of the studio to the carpark or street. Students are not permitted to wait outside the studio for their parent or guardian.

Students are not to arrive/depart the studio without outer layers over the top of their uniform. Shoes must also be worn.

Dance Central is responsible for the care and well-being of children during their scheduled class time only. We are not responsible for the supervision of students who arrive at the ahead of their class time.

Parents must inform Dance Central of any changes regarding their child's medical condition, emergency contact or address details.

Students taking part in classes or events run by Dance Central do so at their own risk. Dance Central Studios is not liable for personal illness or injury.



DANCER SAFETY

Dance education includes “hands-on” instruction. Physical contact may be necessary to realign students' bodies into the correct positions to improve their technique. This could include touching of the arms, legs, feet, hips, back and head.

Dance Central staff will discuss only a child's progress with their parent. Discussion about the learning of other students will not be entered into.

Photographs and videos of students may be taken by staff by agreeing to these terms and conditions, you give consent for these photos to be used on the website, Facebook or for advertising purposes.

CODE OF CONDUCT

Parents have a responsibility to notify Dance Central Studios of any illness, injury, or absences from classes.

Observers may watch lessons during the term but must remain silent. Siblings or dependents should be removed if they are disturbing the class, and remain outside for the rest of the lesson.

Parents/observers are only permitted to take photographs of their child during class.

Students are expected to conduct themselves in a disciplined manner whilst attending classes and be respectful to both teachers and fellow students.

Parents are expected to uphold themselves in the same manner. Abuse will not be tolerated. If a parent chooses to display disrespectful behaviour or cause conflict or harm to others, their dancer(s) will be asked to leave the school.

Students should arrive ahead of their scheduled class time, in uniform.

Food or drink is not permitted to be brought into class, except for named water bottles.

All cell phones must be on silent mode. Calls must be made outside of the studio. Student's phones are to remain in their bags during a lesson.

The studio takes no responsibility for the loss or damage of personal property. All items are brought to the studio by students at their own risk.

If we consider you or your child to be in breach of these terms and conditions Dance Central Studios reserves the right to refuse services.

Dance Central Studios reserves the right to amend or alter these terms and conditions at any time without prior notice.

OUR TIMETABLE

TERM TWO

START MONDAY 20 APRIL - END SATURDAY 4 JULY

		RISINGHOLME		HUNTSBURY		
MONDAY						
4.15 - 5.00	M	Hip Hop Open				
5.00 - 6.00	M	Teen Jazz (Ele NZAMD)				
6.00 - 7.00	M	Teen Company				
TUESDAY						
3.45 - 4.45	S	Grade 1 Ballet		4.15 - 5.30	J	Advanced 1 Ballet 2nd Yr
4.45 - 6.00	S	Inter - Found Ballet		5.30 - 6.30	J	Senior Lyrical
6.00 - 7.00	S	Open Lyrical/Contemporary		6.30 - 7.30	J	Senior Jazz (Adv 2 NZAMD)
7.00 - 8.00	S	Advanced 1 Ballet 1st Yr				
WEDNESDAY						
2.00 - 4.00	S	Classical Extention		4.30-5.30	S	Grade 3 Ballet
4.00 - 5.00	J	Senior Company		5.30 - 6.30	S	Grade 5 Ballet
5.00 - 6.00	J	Senior Contemporary (Level 5 NZAMD)		6.30 - 7.30	S	Private Lesson TBA
THURSDAY						
4.00 - 5.00	J	Junior Modern (Pending Enrollments)		5.00 - 6.00	L	Private Lesson TBA
5.00 - 5.45	J	Pre Teen Jazz (G4 NZAMD)		6.00 - 7.00	L	Private Lesson TBA
5.45 - 6.45	J	Pre Teen Company				
6.45 - 7.45	S	Adult Ballet				
FRIDAY						
3.30 - 4.00		Mini Modern				
4.00 - 5.00	S	Grade 4 Ballet				
5.00 - 5.30	S	Stretch & Conditioning		5.00 - 6.00	L	Private Lesson TBA
5.30 - 7.00	S	Open Ballet - Class		6.00 - 7.00	L	Private Lesson TBA
7.00 - 8.00	S	Ballet Company				
8.00 - 8.30	S	Private Lesson TBA				
SATURDAY						
				9.00 - 9.30	S	Preschool Dance
				9.30 - 10.15	S	Primary Ballet
				10.15 - 11.15	S	Grade 2 Ballet
				11.15 - 12.45	S	Advanced 1 Ballet
				12.45 - 1.30	S	Pointe/Strength & Conditioning
				1.30 - 2.30	S	Inter-Found Ballet
				2.30 - 3.30	S	Grade 4 Ballet
				3.30 - 4.30	S	Grade 5 Ballet
				4.30 - 5.30	S	Intermedtate Ballet

Colour	Appox	Level
	3-5	Preschool
	5-6	Mini
	7-9	Junior
	9-12	Pre-teen
	12-16	Teen
	15-18	Senior
	Any	Open

Public Holidays - Please Note

Anzac Day: Saturday 25 April - Classes still run
 Anzac Day observed on: Monday 27 April - Classes still run
 King's Birthday: Monday 1 June - No classes run



DANCE CENTRAL STUDIOS

Operating from Huntsbury
and Opawa

www.dancecentral.org.nz

facebook.com/dancecentralstudios